

1. Machine Screws



Cross recessed raised cheese head screw
DIN7985/ISO7045



Cross recessed countersunk head screw
DIN965/ISO7046



Cross recessed pan head screw with collar
DIN967



Cross recessed raised countersunk head screw
DIN966/ISO7047



Hexalobular socket pan head screw
DIN EN ISO14583



Hexalobular socket countersunk head screw
DIN EN ISO14581



Hexalobular socket head cap screw
DIN EN ISO14579



Hexalobular socket raised countersunk head screw
DIN EN ISO14584

- ◆ Spec: DIN, ISO, ANSIB, JIS, Drawing, Sample
- ◆ Standard: DIN7985, DIN965, DIN84, DIN963, ISO14583, ISO14581, ISO14579, ISO14584
Raised cheese Hd., Countersunk Hd., Pan Hd., Raised Countersunk Hd., Cap Hd.
- ◆ Recess: Cross Recessed, Hexalobular
- ◆ Dia. : M2 ~ M12 ; #2 ~ 1/2"
- ◆ Length: 3 ~ 60mm ; 5/32" ~ 4"
- ◆ Material : A2, A4, SUS 304, SUS 316

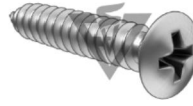
2. Tapping Screws



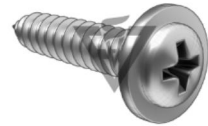
Cross recessed pan head tapping screw
DIN7981/ISO7049



Cross recessed countersunk head tapping screw
DIN7982/ISO7050



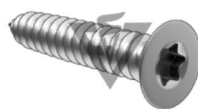
Cross recessed raised countersunk head tapping screw
DIN7983/ISO7051



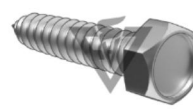
Cross recessed round head tapping screw with collar
DIN968



Hexalobular socket pan head tapping screw
DIN EN ISO 14585



Hexalobular socket countersunk head tapping screw
DIN EN ISO 14586



Hexagon head tapping screw with indentation
DIN 7976/ISO1479



Hexagon washer head tapping screw
DIN6928/ISO7053

- ◆ Spec: DIN, ISO, ANSIB, JIS, Drawing, Sample
- ◆ Standard: DIN7981, DIN7982, DIN7983, DIN968, ISO14585, ISO14586, ISO1479, ISO7053, Pan Hd., Countersunk Hd., Raised Countersunk Hd., Hexagon Hd.
- ◆ Recess: Cross Recessed, Hexalobular
- ◆ Dia.: ST2.2 ~ ST6.3 ; #2 ~ #1/4
- ◆ Length: 6 ~ 60mm ; 1/4" ~ 2-1/2"
- ◆ Material: A2, A4, SUS 304, SUS 316

3. Slotted Screws



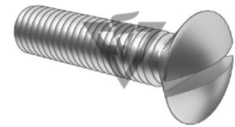
Slotted cheese
head screw
**DIN 84/
ISO1207**



Slotted pan
head screw
**DIN85/
ISO1580**



Slotted
countersunk
head screw
**DIN963/
ISO2009**

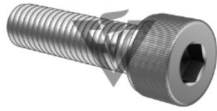


Slotted raised
countersunk
head screw
**DIN964/
ISO2010**

- ◆ Spec: DIN, ISO, ANSIB, JIS, Drawing, Sample
- ◆ Standard: DIN84, DIN85, DIN963, DIN964,
Cheese Hd., Pan Hd., Countersunk Hd.,
Raised Countersunk Hd.
- ◆ Recess: Slotted.
- ◆ Dia. : M2 ~ M8; #2 ~ 5/16"
- ◆ Length: 6 ~ 60mm ; 1/4" ~ 2-1/2"
- ◆ Material: A2, A4, SUS 304, SUS 316



4. Socket Head Screws



Hexagon socket head cap screw-knurled head
DIN912/ISO4762



Hexagon socket button head screw
DIN EN ISO7380-1



Hexagon socket button head screw with collar
DIN EN ISO7380-2



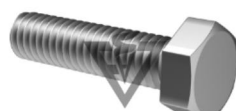
Hexagon socket countersunk head screw
DIN7991/ISO10642



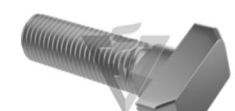
Hexagon socket thin head cap screw
DIN7984



Hexalobular socket cheese head screw
DIN EN ISO14580



Hexagon head bolt
DIN933/DIN931



Hammer bolt
DIN261/DIN787

- ◆ Spec: DIN, ISO, ANSIB, JIS, Drawing, Sample
- ◆ Standard: DIN912, DIN7380-1, DIN7380-2, DIN7991, DIN7984, ISO14580, DIN933, DIN261, Cap Hd., Button Hd., Hexagon Hd., Countersunk Hd., Thin Cap Hd., Cheese Hd., T-Hd
- ◆ Recess: Hexagon, Hexalobular
- ◆ Dia. : M2 ~ M16 ; #2 ~ 5/8"
- ◆ Length: 4 ~ 120mm ; 5/32" ~ 4-3/4"
- ◆ Material: A2, A4, SUS 304, SUS 316



5. Set Screws



Hexagon socket set screw with flat point
DIN913/ISO4026



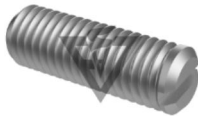
Hexagon socket set screw with cone point
DIN914/ISO4027



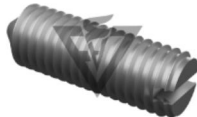
Hexagon socket set screw with dog point
DIN915/ISO4028



Hexagon socket set screw with cup point
DIN916/ISO4029



Slotted set screw with flat point
DIN 27466/ISO4766



Slotted set screw with cone point
DIN27434/ISO7434



Slotted set screw with dog point
DIN27435/ISO7435



Slotted set screw with cup point
DIN 27436/ISO7436

- ◆ Spec: DIN, ISO, ANSIB, JIS, Drawing, Sample
- ◆ Standard: DIN913, DIN914, DIN915, DIN916, ISO4766, ISO4734, ISO4735, ISO4736
Flat Point, Cone Point, Dog Point, Cup Point
- ◆ Recess: Hexagon, Slotted
- ◆ Dia. : M2 ~ M10 ; #2 ~ 3/8"
- ◆ Length: 4 ~ 40mm ; 5/32" ~ 1-1/2"
- ◆ Material: A2, A4, SUS 304, SUS 316

6. Self Drilling Screws



Hexagon head
drilling screw with
tapping screw
thread with collar
**DIN7504K/
ISO15480**



Cross recessed
pan head drilling
screw with tapping
screw thread
**DIN7504M/
ISO15481**



Cross recessed
countersunk head
drilling screw with
tapping screw thread
**DIN7504O/
ISO15482**



Cross recessed raised
countersunk head
drilling screw with
tapping screw thread
**DIN7504R/
ISO15483**

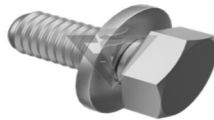
- ◆ Spec: DIN, ISO, ANSIB, JIS, Drawing, Sample
- ◆ Standard: DIN7504K, DIN7504M, DIN7504O, DIN7504R, Hexagon Hd., Pan Hd., Countersunk Hd., Raised Countersunk Hd.
- ◆ Recess: Cross Recessed, Hexagon.
- ◆ Dia.: ST3.5 ~ST6.3 ; #6 ~ #14
- ◆ Length: 13 ~ 80mm ; 1/2" ~ 3"
- ◆ Material: A2, A4, SUS410, SUS 304, SUS 316



7. Washer Assembly of Sems



Cross recessed pan head screw, plain washer assemblies
DIN6900-1/ ISO10644



Hexagon head screw, plain washer assemblies
DIN6900-1/ ISO10644



Hexagon socket head cap screw - knurled head, spring and plain washer assemblies
DIN912 SEMS



Hexagon socket button head screw, spring and plain washer assemblies
ISO7380 SEMS



Hexagon head bolt, spring and plain washer assemblies
GB9074.17



Cross recessed hexagon head bolt with indentation, spring and plain washer assemblies
GB9074.13



Cross recessed pan head screw, plain and spring washers assemblies
GB9074.4

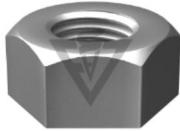


Cross recessed small pan head screw, plain and spring washer assemblies
GB9074.8

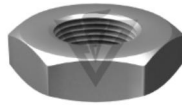
- ◆ Spec: DIN, ISO, ANSIB, JIS, Drawing, Sample
- ◆ Standard: DIN6900-1, DIN6900-1, DIN912 SEMS, ISO7380 SEMS, GB9074.17, GB9074.13, GB9074.4, GB9074.8, Hexagon Hd., Pan Hd., Small Pan Hd., Cap Hd., Button Hd.
- ◆ Recess: Cross Recessed, Hexagon
- ◆ Dia. : M2.5 ~ M12 ; #4 ~ 1/2"
- ◆ Length: 6 ~ 100mm ; 5/16" ~ 4"
- ◆ Material : A2, A4, SUS 304, SUS 316



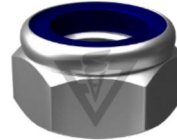
8. Nuts & Washers



Hexagon nut
**DIN934/
ISO4032**



Hexagon thin nut
DIN936/ ISO4035



Prevailing torque
type hexagon
thin nut with
nonmetallic insert
DIN985/ ISO10511



Wing nut with
rounded wings
DIN315



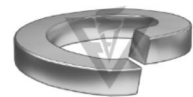
Square nut
DIN557



Plain washer
**DIN125/
ISO7089**



Large plain washer
**DIN EN ISO
7093(1)**



Spring lock
washer
DIN127

- ◆ Spec: DIN, ISO, ANSIB, JIS, Drawing, Sample
- ◆ Standard: DIN934, DIN936, DIN985, DIN315,
DIN557, ISO7089, ISO7093(1), DIN127

- ◆ Dia.: M2 ~ M24 ; #2 ~ 1"
- ◆ Material: A2, A4, SUS 304, SUS 316